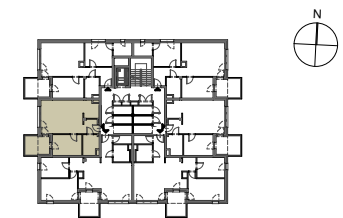
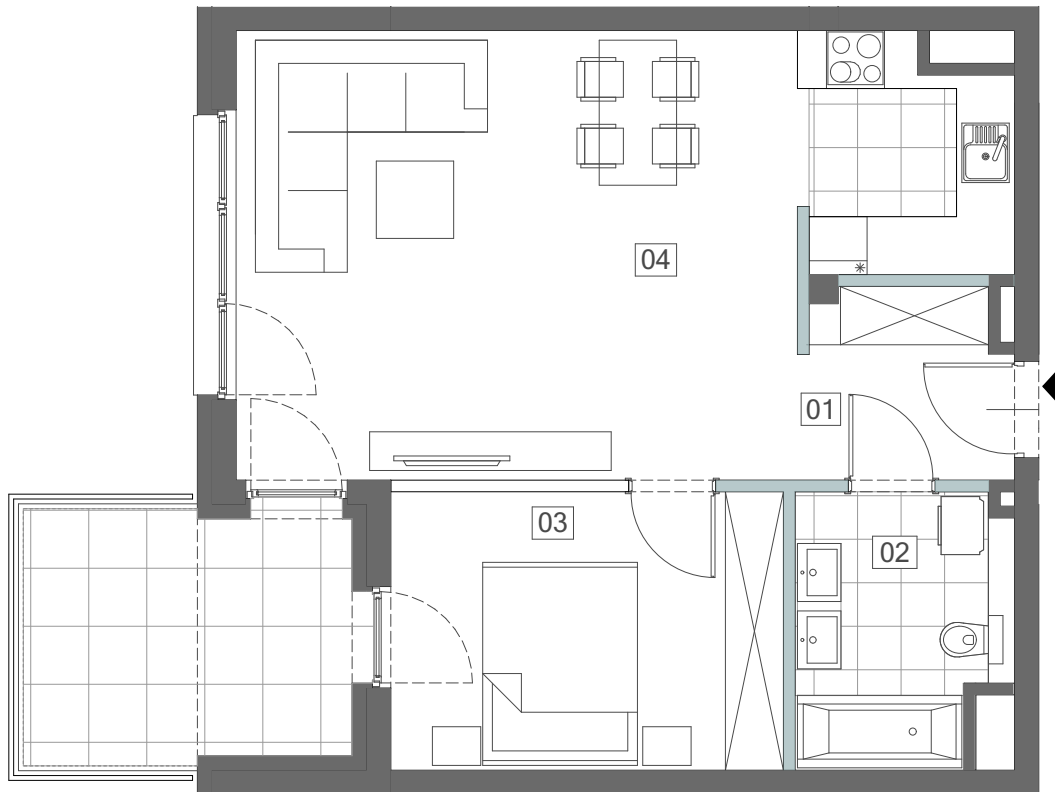


MIESZKANIE M5 POZIOM 2

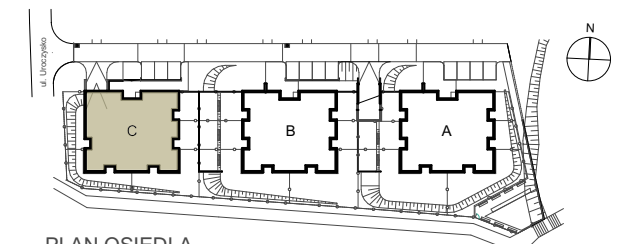
01 PRZEDPOKÓJ	3,89m ²
02 ŁAZIENKA	5,84m ²
03 SYPIALNIA	11,48m ²
04 SALON Z ANEKS. KUCH.	31,91m ²

POWIERZCHNIA RAZEM 53,12m²

BALKON 9,02m²



PLAN BUDYNKU C POZIOM 2



PLAN OSIEDLA