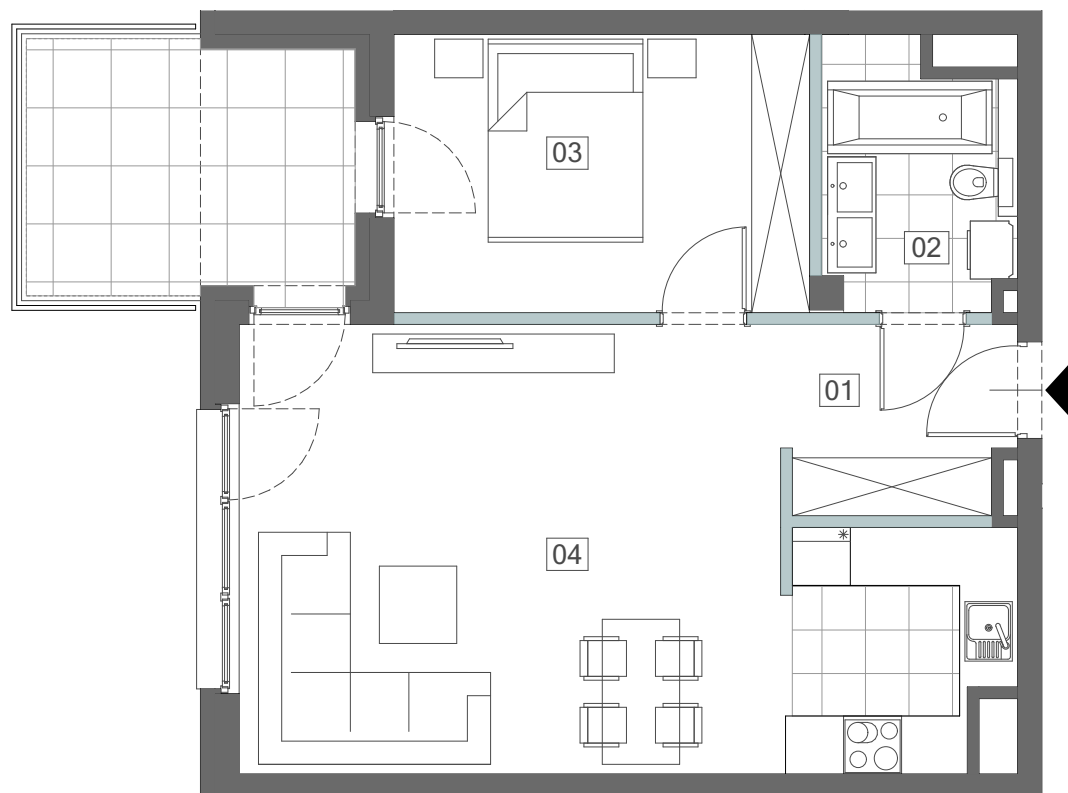


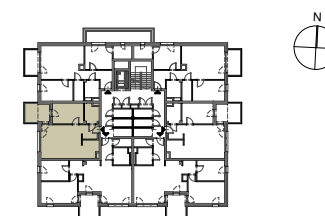
MIESZKANIE M5 POZIOM 1

01 PRZEDPOKÓJ	4,48m ²
02 ŁAZIENKA	5,05m ²
03 SYPIALNIA	12,16m ²
04 SALON Z ANEKS. KUCH.	31,33m ²

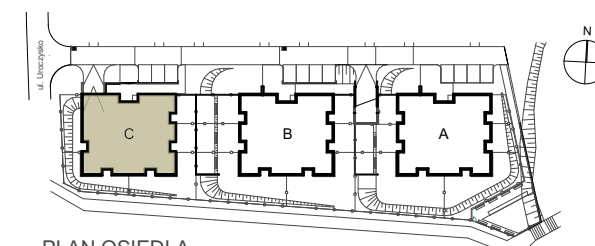
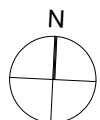


POWIERZCHNIA RAZEM 53,02m²

BALKON 9,02m²



PLAN BUDYNKU C POZIOM 1



PLAN OSIEDLA