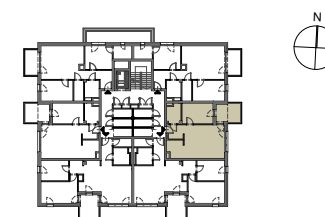
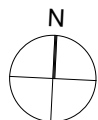
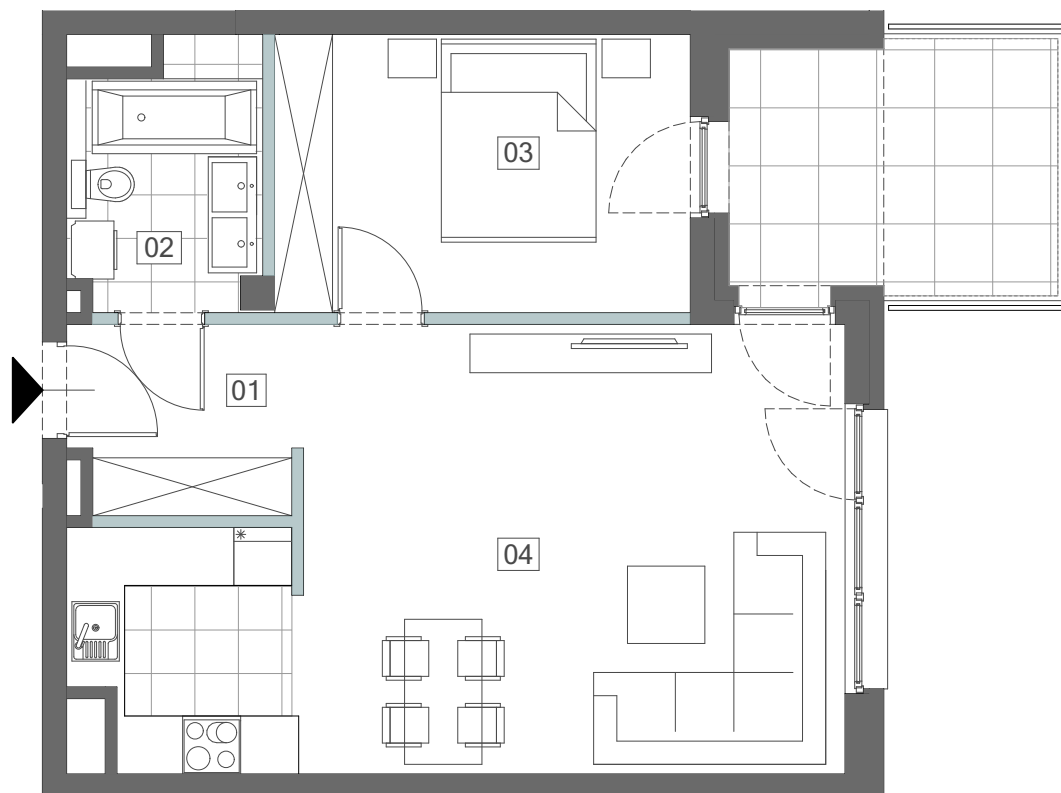


MIESZKANIE M2 POZIOM 1

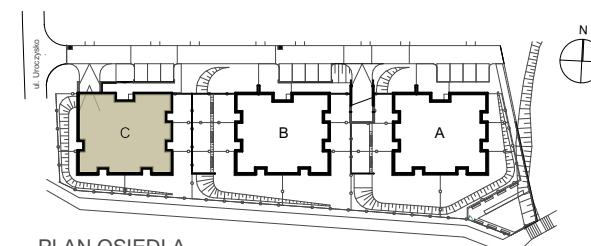
01 PRZEDPOKÓJ	4,48m ²
02 ŁAZIENKA	5,05m ²
03 SYPIALNIA	12,16m ²
04 SALON Z ANEKS. KUCH.	31,33m ²

POWIERZCHNIA RAZEM 53,02m²

BALKON 9,02m²



PLAN BUDYNKU C POZIOM 1



PLAN OSIEDLA