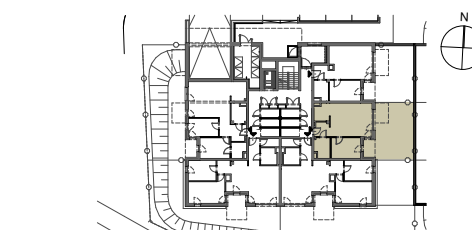
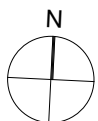
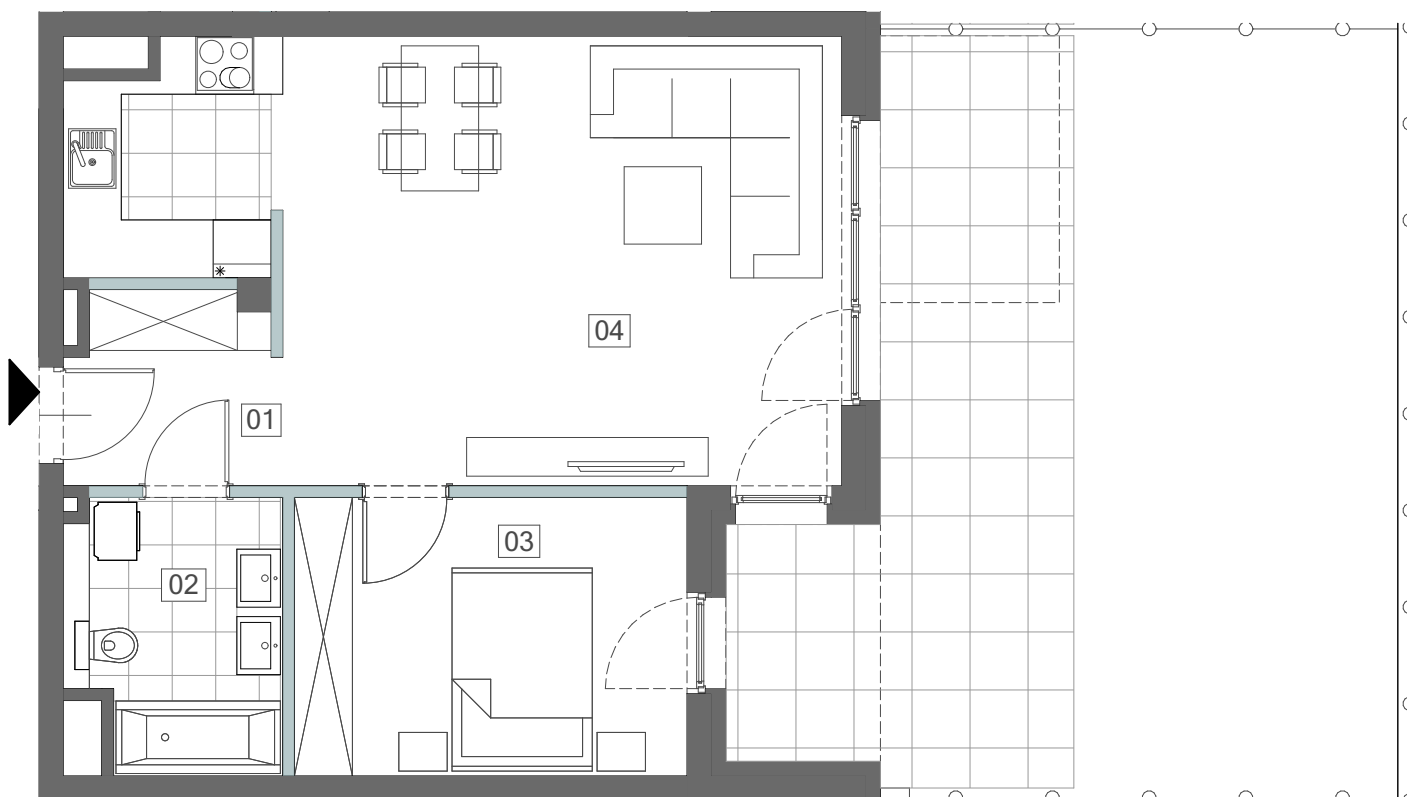


MIESZKANIE M2 POZIOM 0

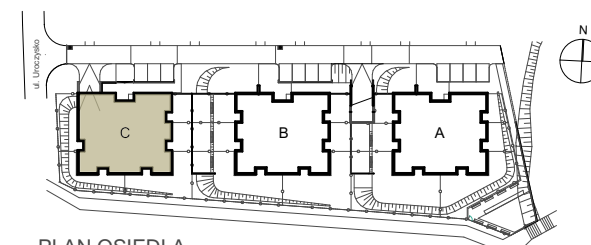
01 PRZEDPOKÓJ	3,97m ²
02 ŁAZIENKA	5,84m ²
03 SYPIALNIA	11,48m ²
04 SALON Z ANEKS. KUCH.	31,80m ²

POWIERZCHNIA RAZEM 53,09m²

OGRÓDEK 47,44m²



PLAN BUDYNKU C POZIOM 0



PLAN OSIEDLA