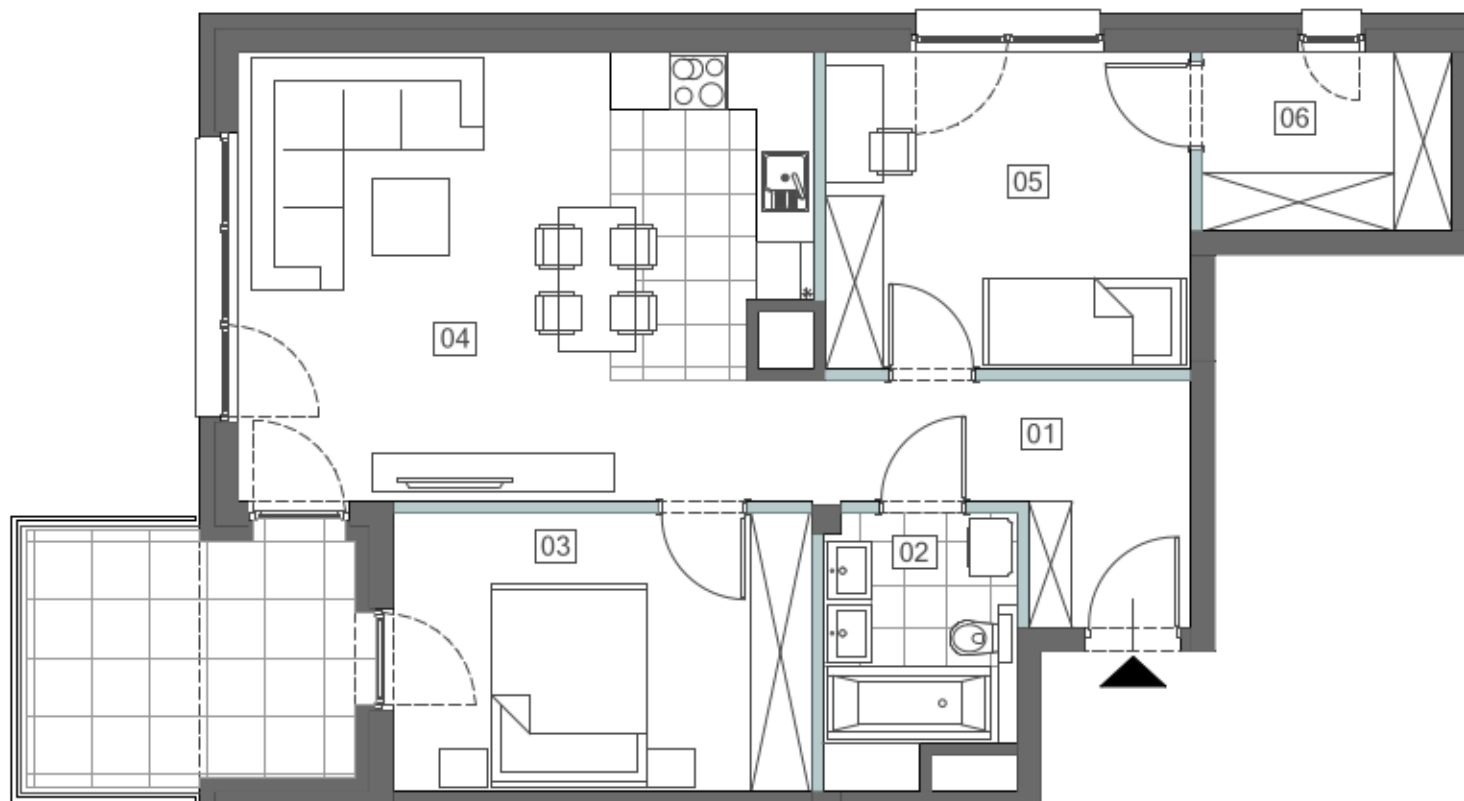


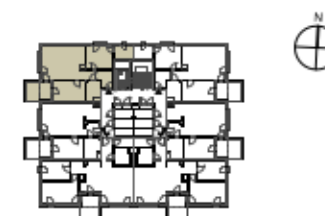
## MIESZKANIE M6 POZIOM 2



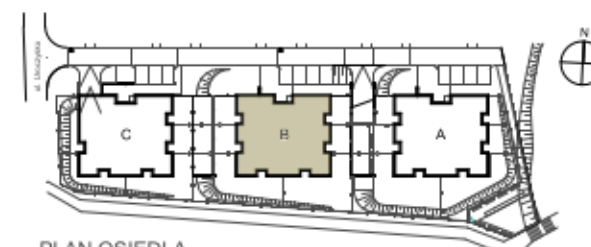
01 PRZEDPOKÓJ	6,96m <sup>2</sup>
02 ŁAZIENKA	5,09m <sup>2</sup>
03 SYPIALNIA	12,24m <sup>2</sup>
04 SALON Z ANEKS. KUCH.	26,68m <sup>2</sup>
05 SYPIALNIA	12,18m <sup>2</sup>
06 SCHOWEK	4,64m <sup>2</sup>

**POWIERZCHNIA RAZEM** 67,79m<sup>2</sup>

**BALKON** 9,02m<sup>2</sup>



PLAN BUDYNKU B POZIOM 2



PLAN OSIEDLA