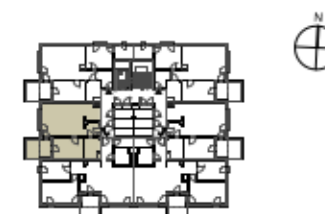
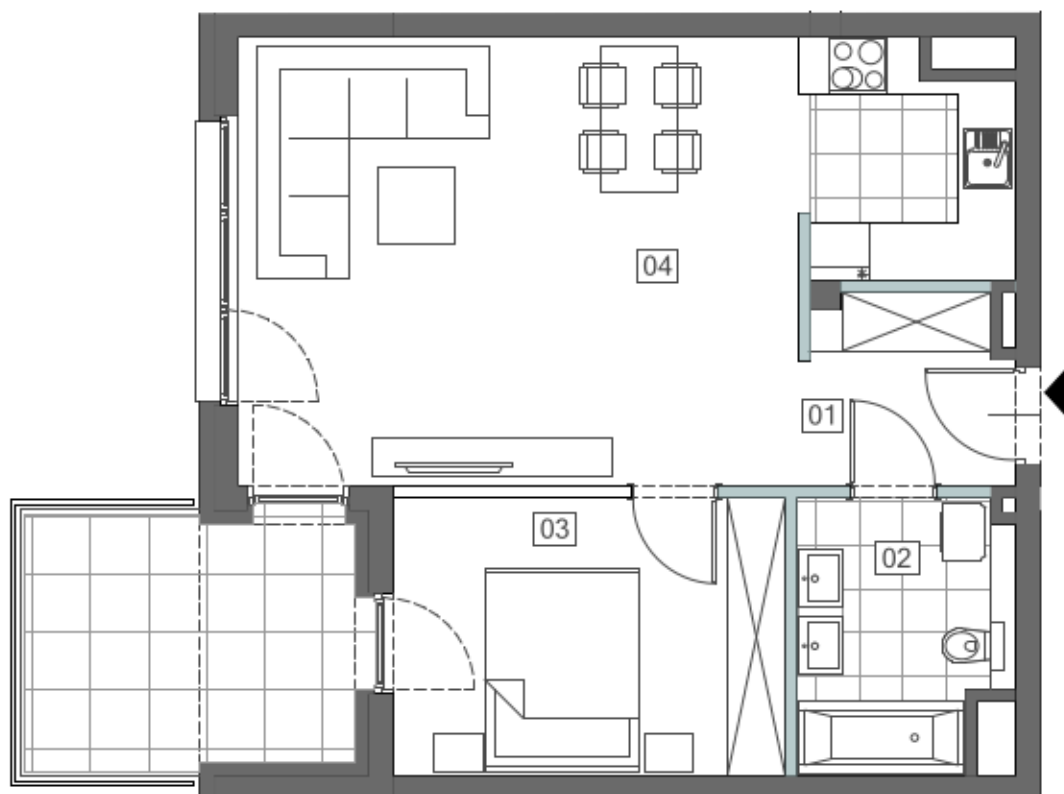


## MIESZKANIE M5 POZIOM 2

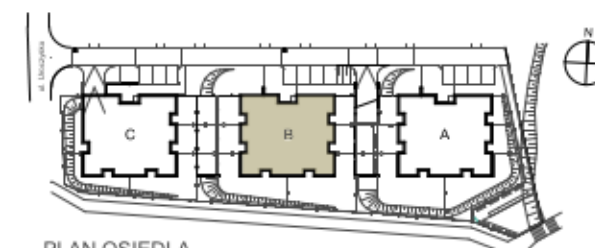
01 PRZEDPOKÓJ	3,89m <sup>2</sup>
02 ŁAZIENKA	5,84m <sup>2</sup>
03 SYPIALNIA	11,48m <sup>2</sup>
04 SALON Z ANEKS. KUCH.	31,91m <sup>2</sup>

POWIERZCHNIA RAZEM 53,12m<sup>2</sup>

BALKON 9,02m<sup>2</sup>



PLAN BUDYNKU B POZIOM 2



PLAN OSIEDLA

