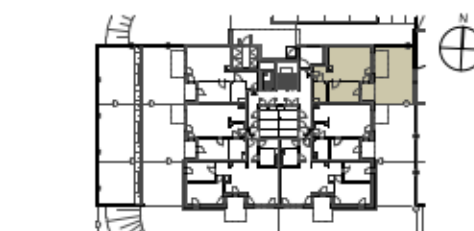
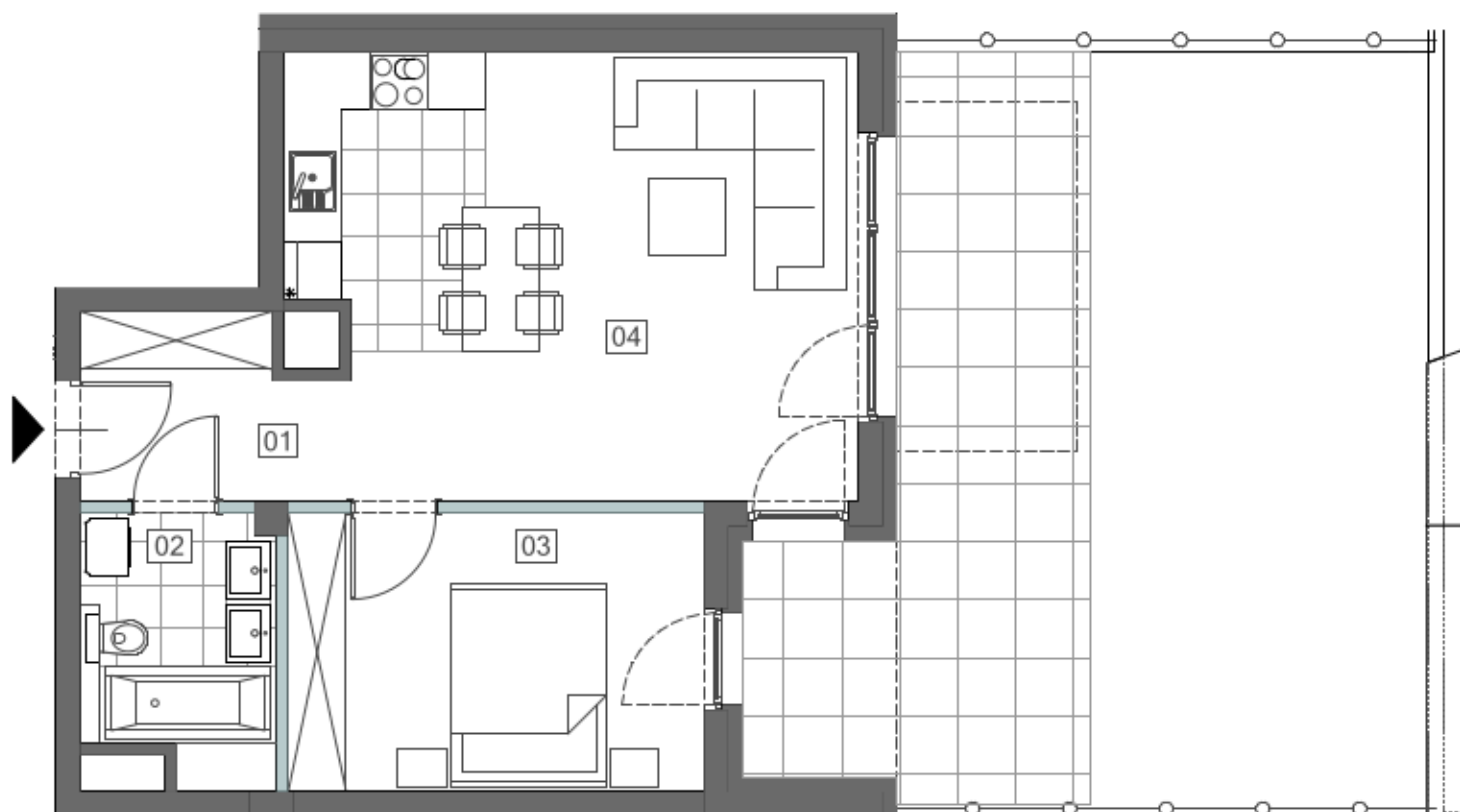


MIESZKANIE M1 POZIOM 0

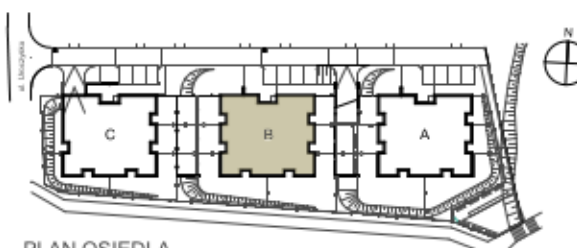
01 PRZEDPOKÓJ	4,02m ²
02 ŁAZIENKA	5,14m ²
03 SYPIALNIA	12,16m ²
04 SALON Z ANEKS. KUCH.	26,68m ²

POWIERZCHNIA RAZEM 48,00m²

OGRÓDEK 47,53m²



PLAN BUDYNKU B POZIOM 0



PLAN OSIEDLA

