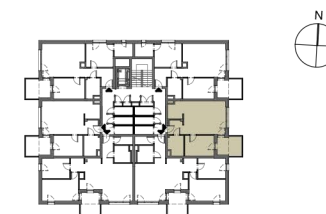
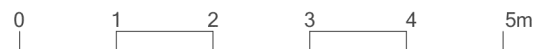
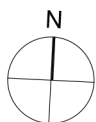
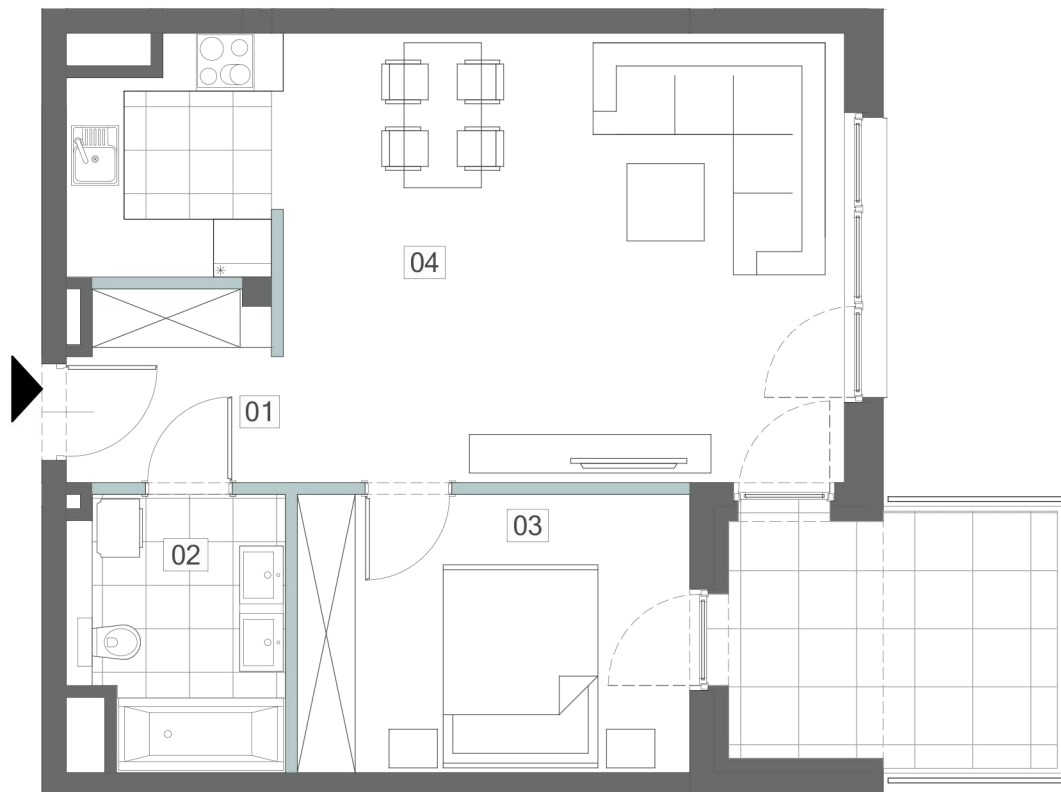


## MIESZKANIE M2 POZIOM 2

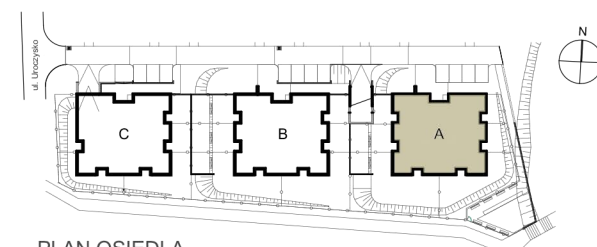
01 PRZEDPOKÓJ	3,90m <sup>2</sup>
02 ŁAZIENKA	5,84m <sup>2</sup>
03 SYPIALNIA	11,48m <sup>2</sup>
04 SALON Z ANEKS. KUCH.	31,88m <sup>2</sup>

POWIERZCHNIA RAZEM 53,10m<sup>2</sup>

BALKON 9,02m<sup>2</sup>



PLAN BUDYNKU A POZIOM 2



PLAN OSIEDLA