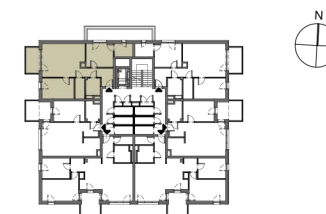


## MIESZKANIE M6 POZIOM 1

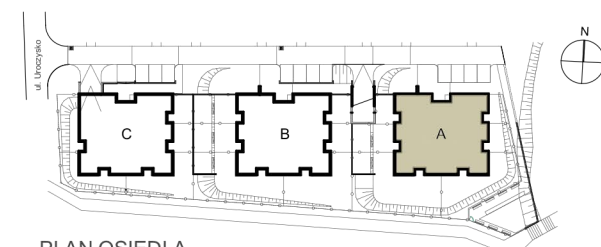
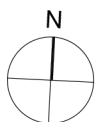
01 PRZEDPOKÓJ	6,96m <sup>2</sup>
02 ŁAZIENKA	5,14m <sup>2</sup>
03 GARDEROBA	3,76m <sup>2</sup>
04 SYPIALNIA	12,54m <sup>2</sup>
05 SALON Z ANEKS. KUCH.	26,68m <sup>2</sup>
06 SYPIALNIA	12,18m <sup>2</sup>
07 SCHOWEK	4,64m <sup>2</sup>

POWIERZCHNIA RAZEM 71,90m<sup>2</sup>

BALKON 6,66m<sup>2</sup>



PLAN BUDYNKU A POZIOM 1



PLAN OSIEDLA