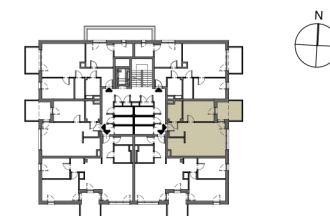
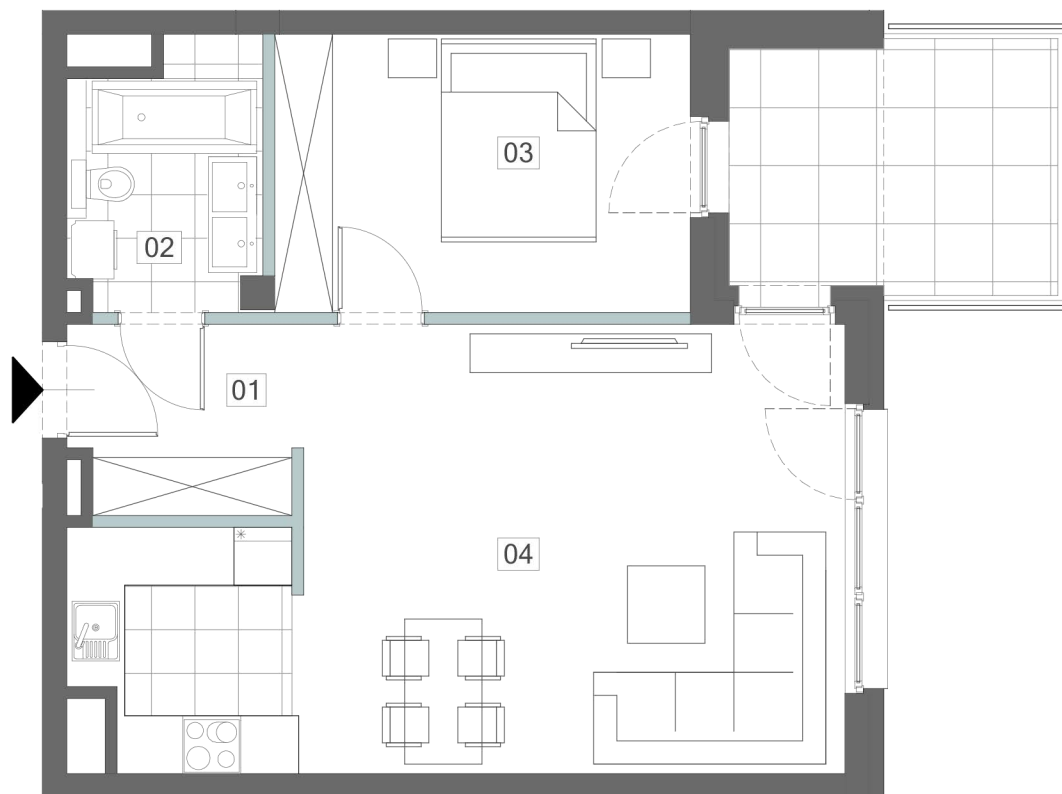


## MIESZKANIE M2 POZIOM 1

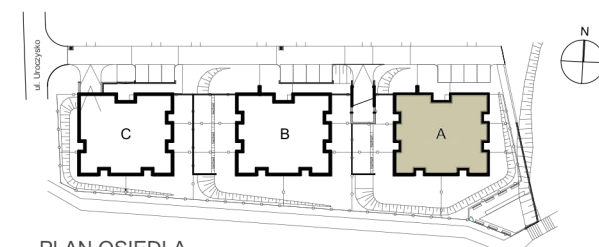
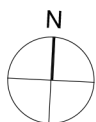
01 PRZEDPOKÓJ	4,48m <sup>2</sup>
02 ŁAZIENKA	5,05m <sup>2</sup>
03 SYPIALNIA	12,16m <sup>2</sup>
04 SALON Z ANEKS. KUCH.	31,33m <sup>2</sup>

POWIERZCHNIA RAZEM 53,02m<sup>2</sup>

BALKON 9,02m<sup>2</sup>



PLAN BUDYNKU A POZIOM 1



PLAN OSIEDLA