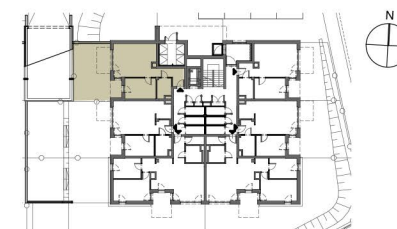
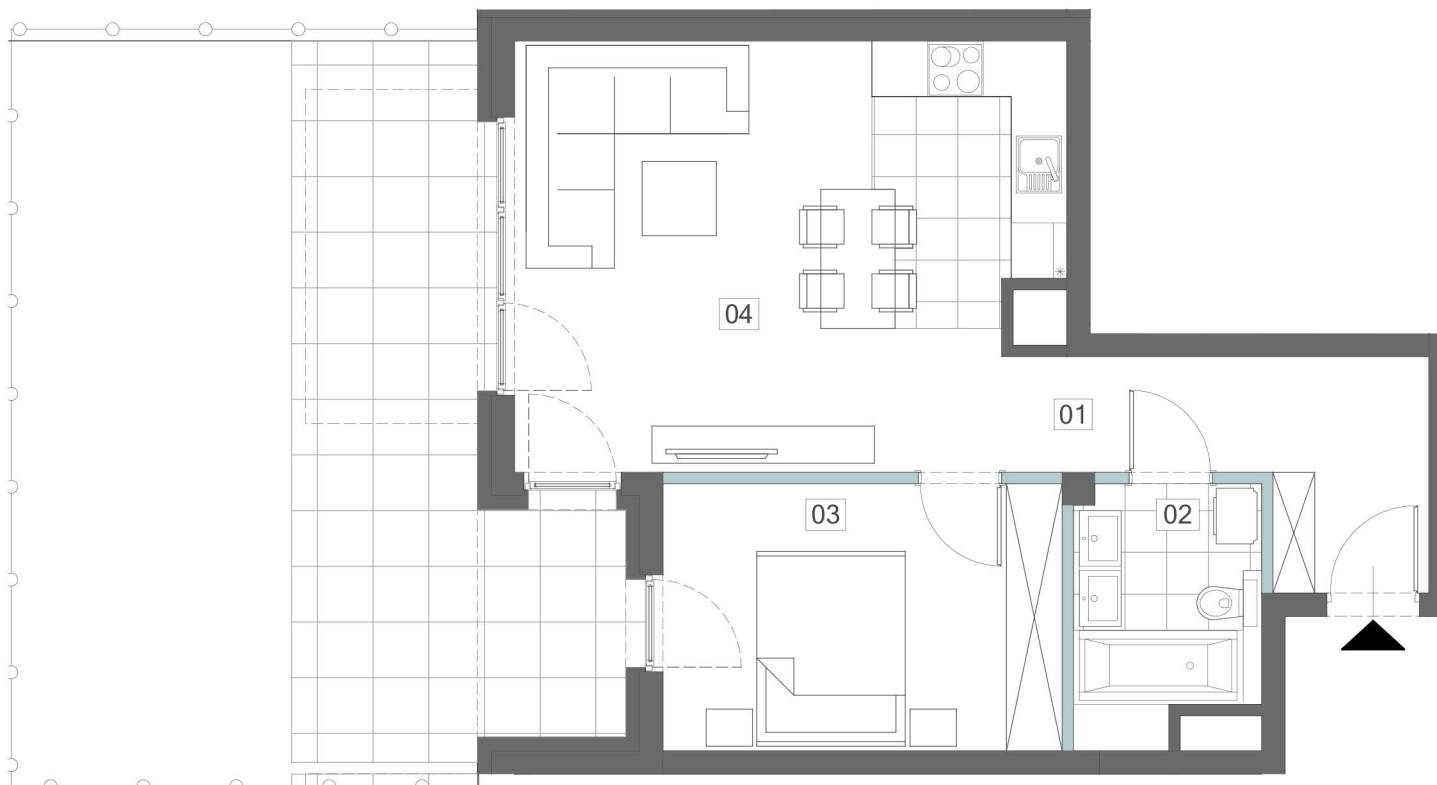


## MIESZKANIE M6 POZIOM 0

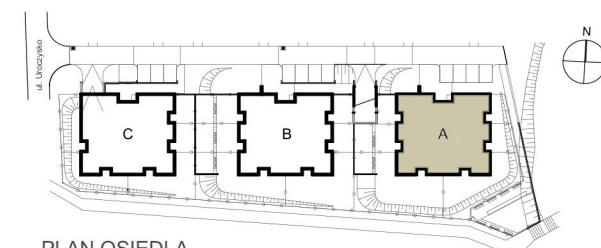
01 PRZEDPOKÓJ	6,96m <sup>2</sup>
02 ŁAZIENKA	5,14m <sup>2</sup>
03 SYPIALNIA	12,16m <sup>2</sup>
04 SALON Z ANEKS. KUCH.	26,68m <sup>2</sup>

POWIERZCHNIA RAZEM 50,94m<sup>2</sup>

OGRÓDEK 44,86m<sup>2</sup>



PLAN BUDYNKU A POZIOM 0



PLAN OSIEDLA

