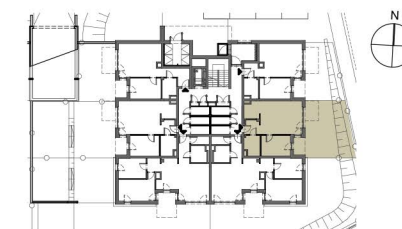


## MIESZKANIE M2 POZIOM 0

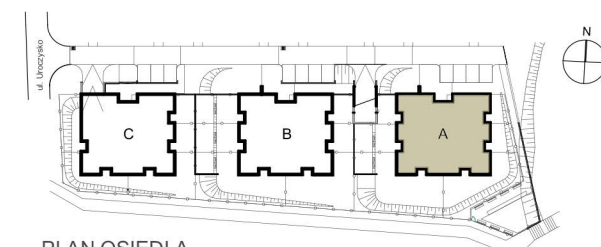
|                         |                     |
|-------------------------|---------------------|
| 01 PRZEDPOKÓJ           | 3,97m <sup>2</sup>  |
| 02 ŁAZIENKA             | 5,84m <sup>2</sup>  |
| 03 SYPIALNIA            | 11,48m <sup>2</sup> |
| 04 SALON Z ANEKS. KUCH. | 31,80m <sup>2</sup> |

**POWIERZCHNIA RAZEM 53,09m<sup>2</sup>**

**OGRÓDEK 54,67m<sup>2</sup>**



PLAN BUDYNKU A POZIOM 0



PLAN OSIEDLA

